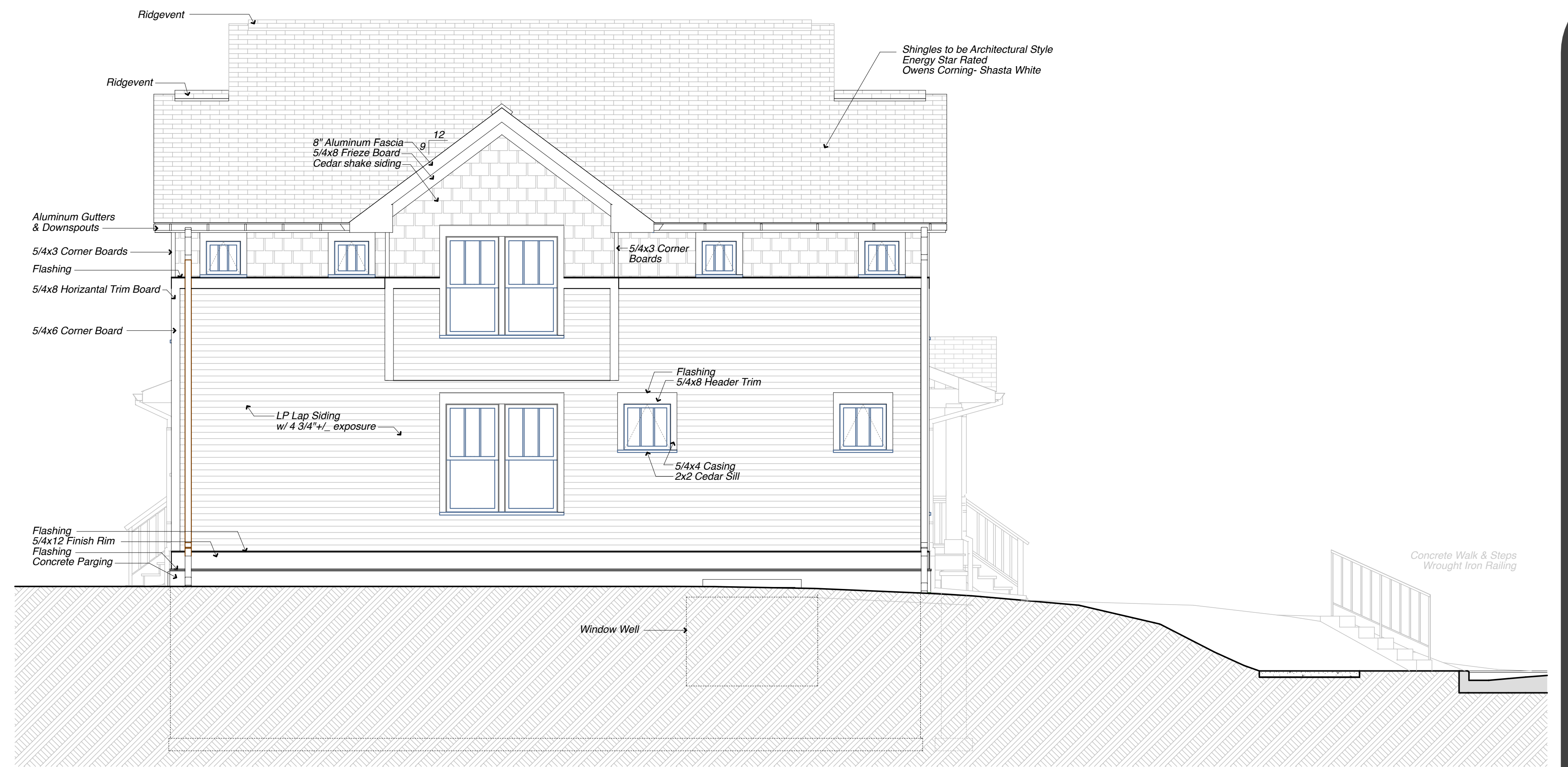


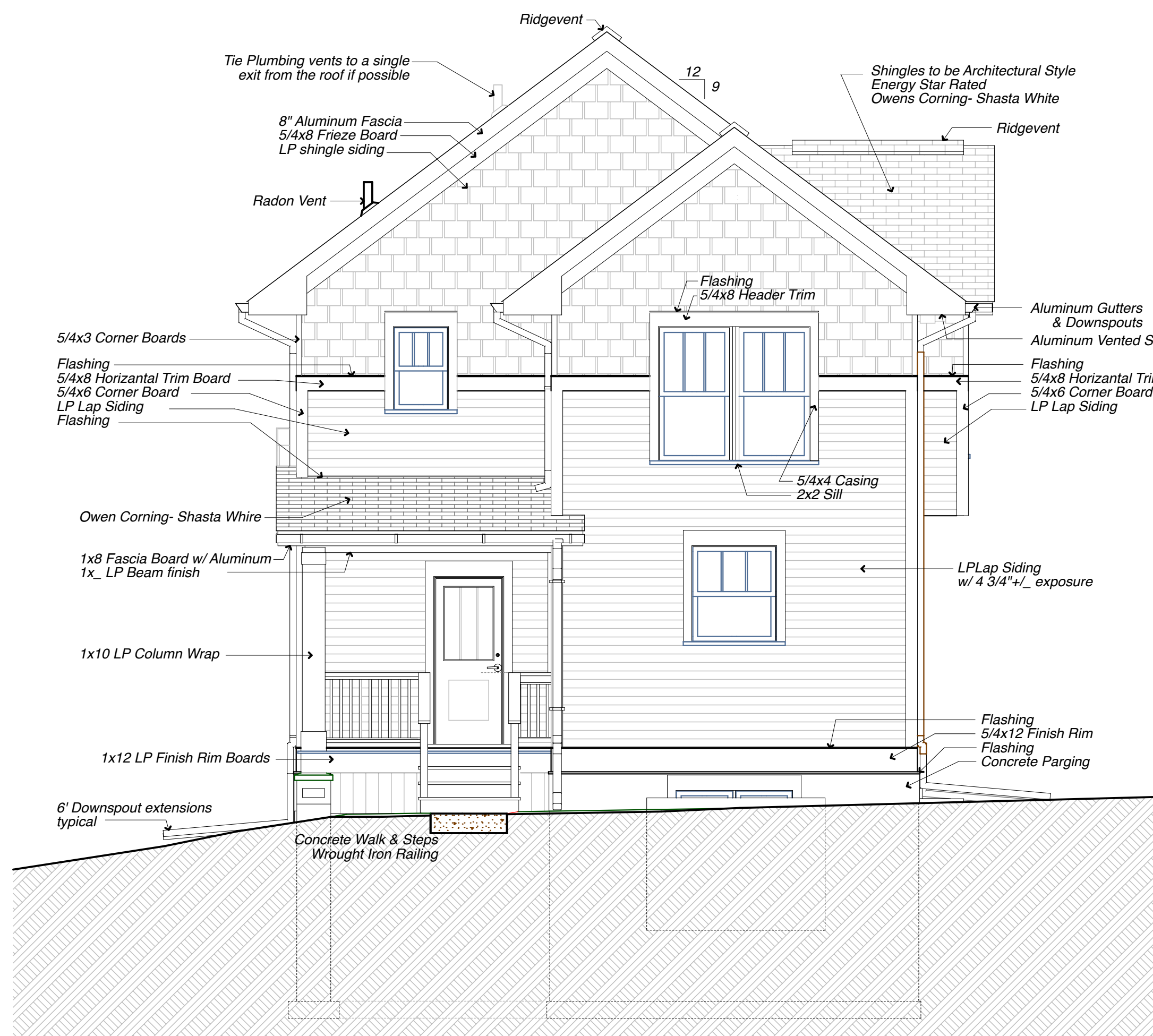
**1 EAST ELEVATION**

SCALE: 1/4" = 1'-0"



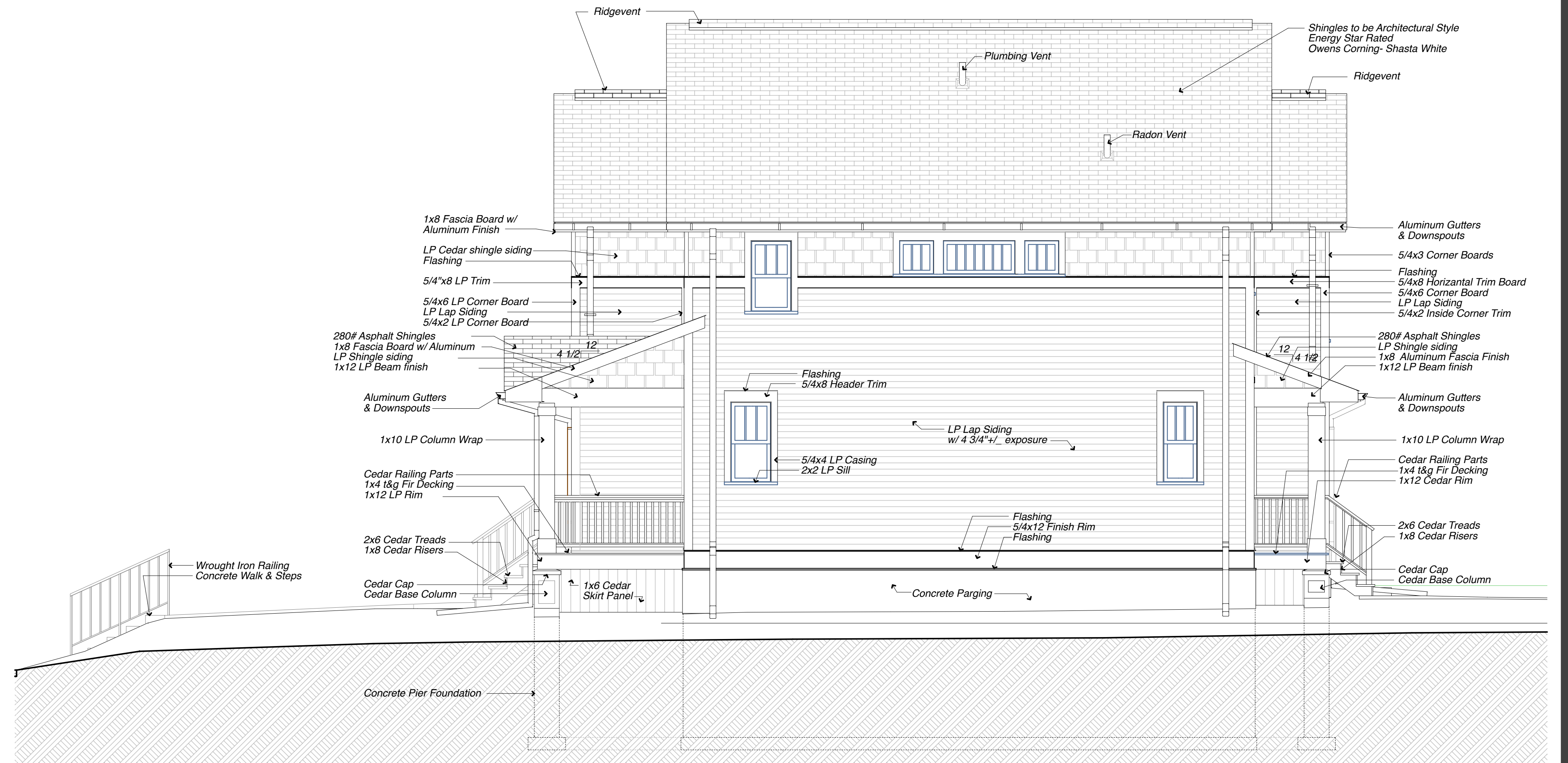
**1 SOUTH ELEVATION**

SCALE: 1/4" = 1'-0"



**1 WEST ELEVATION**

SCALE: 1/4" = 1'-0"



**1 NORTH ELEVATION**

SCALE: 1/4" = 1'-0"

IF THE ABOVE DIMENSION DOES NOT MEASURE ONE INCH (1") EXACTLY, THIS DRAWING WILL HAVE BEEN ENLARGED OR REDUCED, AFFECTING ALL LABELED SCALES.

REVISIONS	DATE

Date: 3/27/15  
 Scale: AS NOTED  
 Drawn:  
 Job#: BUILDING ELEVATIONS  
 Sheet: